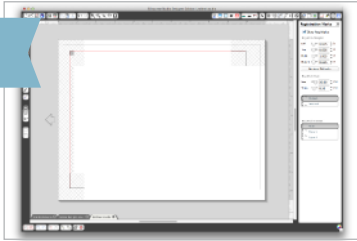




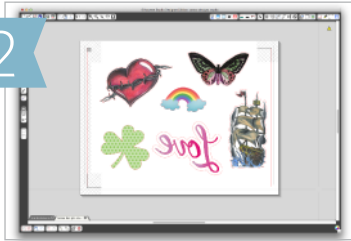
printable tattoo instructions

1



Create a new file and check the box for "Show Registration Marks".

2



Place your "print & cut" image on your screen in the Silhouette software and **MIRROR IT SO THE IMAGE IS REVERSED.**

3



Once you have your image sized and placed on the screen to your liking, feed the tattoo paper into your printer so it will print on the glossy side. Use your printer's photo paper settings if available.

4



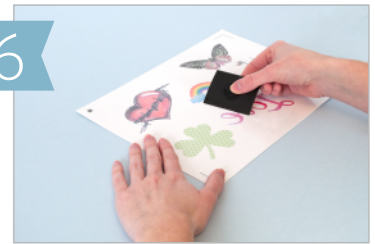
Your adhesive sheet has two sections of backing. Peel away the narrow section on the end.

5



Align the strip of exposed adhesive with your printed image. With that in place, peel the larger section of backing off, smoothing down the adhesive sheet as you go.

6



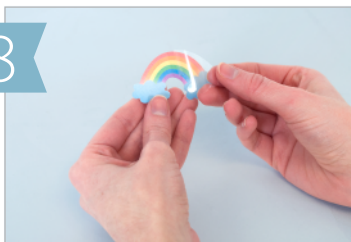
Use a Silhouette scraper tool to rub the adhesive sheet onto the printed image.

7



Place your printed sheet onto a cutting mat and load it into the Silhouette. Select "Temporary Tattoo Paper" from the media type menu and click "Cut". The Silhouette will automatically detect registration marks and begin cutting.

8



Take your cut out tattoo and peel away the clear plastic layer exposing the adhesive.

9



Apply the tattoo's adhesive side to your skin and cover with a wet cloth for 10-15 seconds or until paper backing slides off easily. Temporary tattoos generally last a day and can be removed with a washcloth.